



United Way
of Metro Chicago

The Illinois ACEs Response Collaborative:

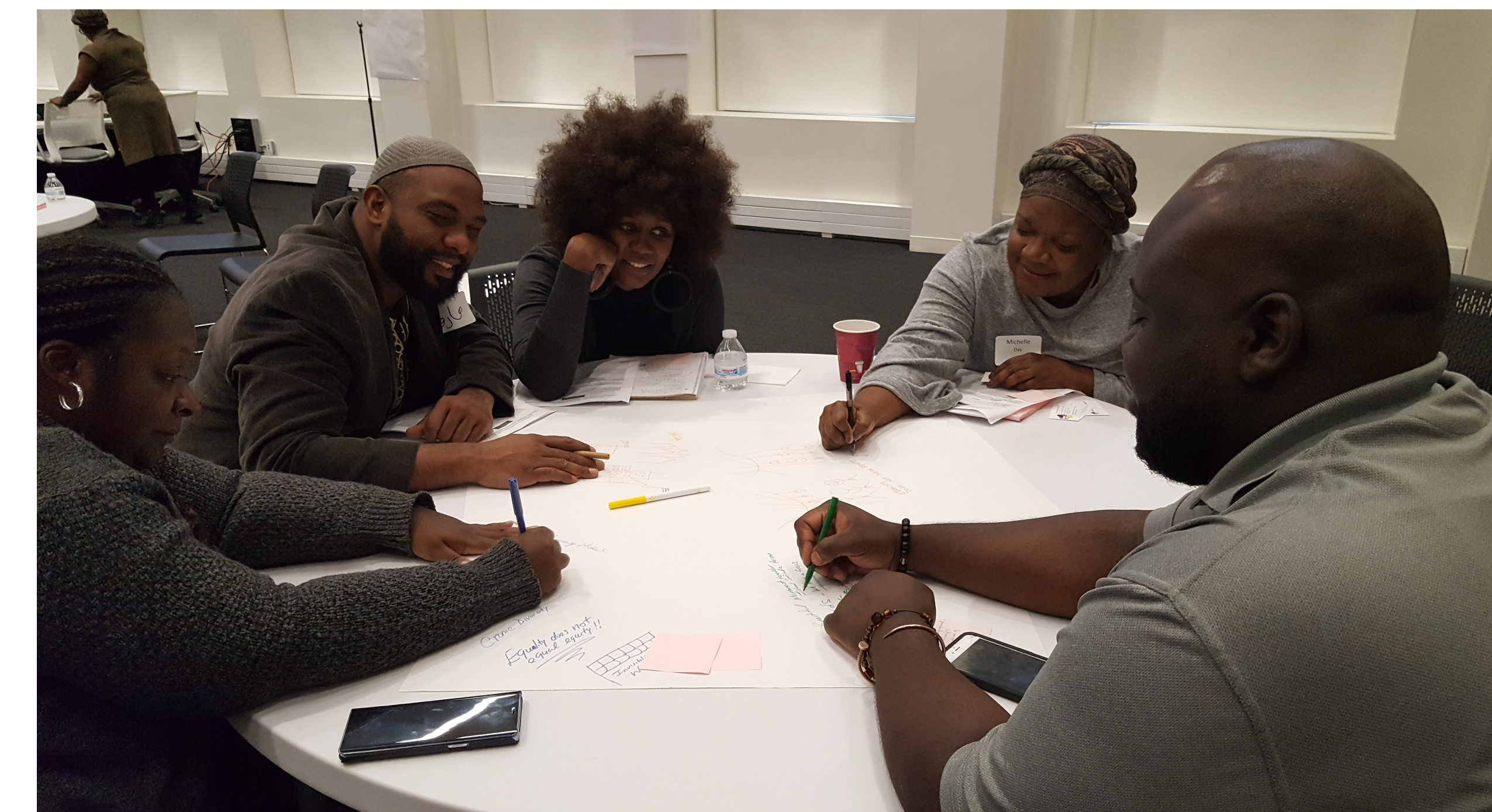
The Collaborative seeks to build capacity to foster a movement around ACEs and resilience in Cook County. Cook County is comprised of 40% of the population of Illinois, representing a large geographic and jurisdictional area. It includes the city of Chicago and 127 surrounding suburbs.



Network Description:

The Collaborative includes:

- 32 organizations,
- Four United Way-sponsored collective impact initiatives within Cook County,
- And leverages the expertise of national expert advisors: Laura Porter, Sandra Bloom, Renee Boynton-Jarrett, and Rob Anda.



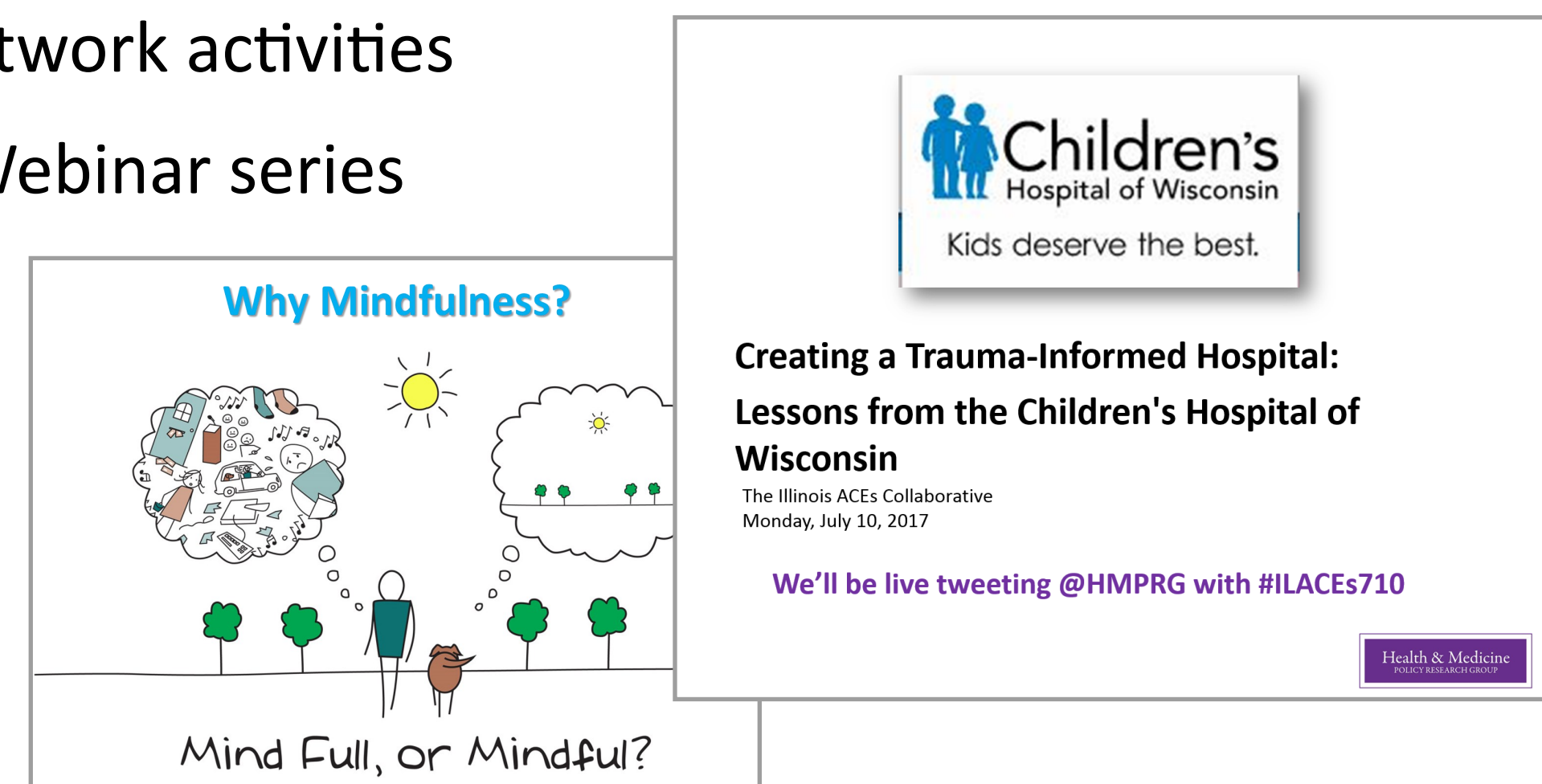
Strategies for Change: MARC Objectives and Key Learnings

Legislative

- **Raise awareness** and inform policy makers on the pervasiveness and impact of ACEs
- **Published data and recommendations** related to:
 - Education → Justice → Health
- Hold informational **meetings with state representatives**

Other Activities:

- Environmental scan
- Ongoing assessment of membership alignment with network activities
- Webinar series



Community

- **Identify promising principles and practices** for addressing ACEs in various sectors across the life course
 - Community Connections Conference: Pathways to Safety, Healing and Wellness
 - 170 attendees joined together to learn from community groups and networks building positive relationships and places of belonging and contribution
- **Support neighborhood initiatives** to implement trauma-informed (TI) services
 - Cicero Police Training



"Helping trauma victims combat trauma, better respond to incidents, being able to identify and cope with my own trauma."

"Can apply info every day and to every call which will in turn help more and make me a better police officer."

→ South Chicago is dedicated to **supporting a resilient culture of safety and wellness** for those who have been impacted by violence

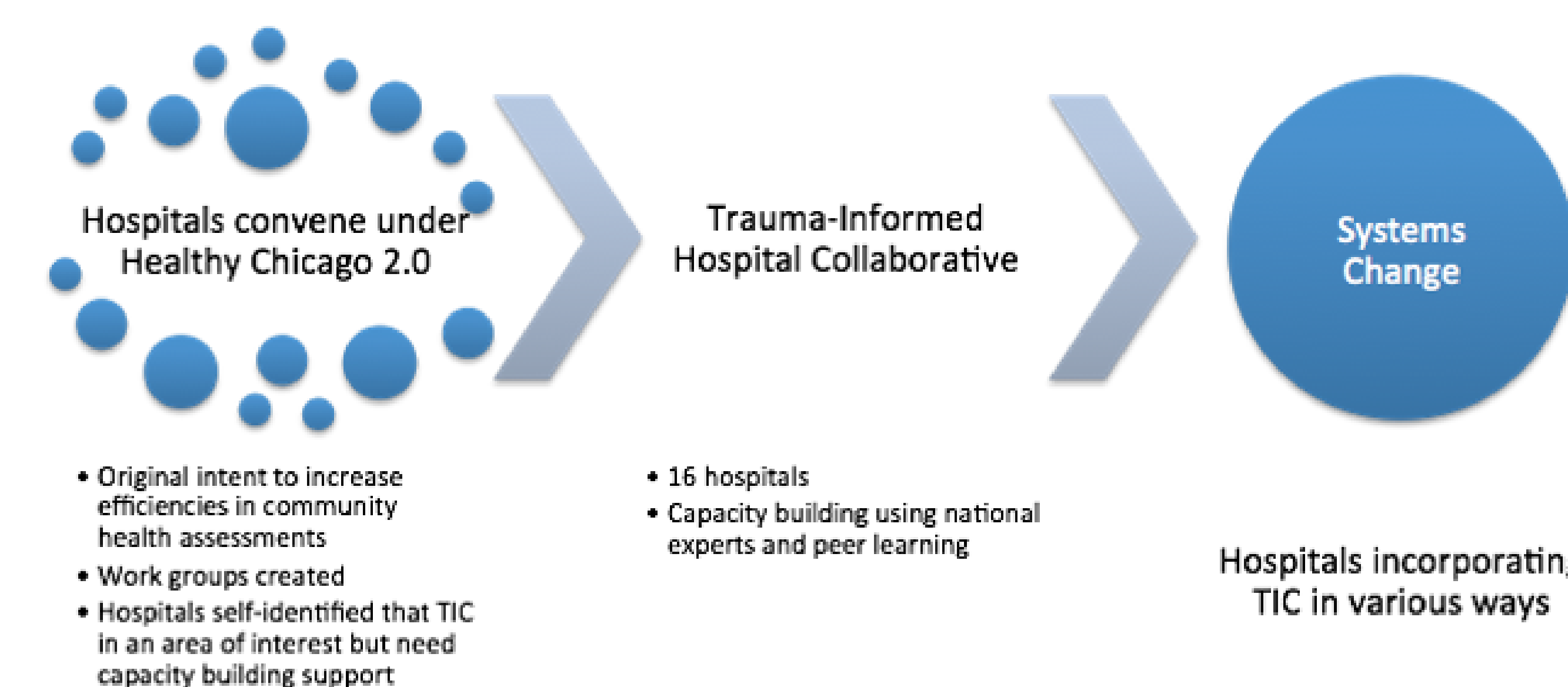
- Community cafes and conversation
- Trauma-informed training with CPS principals

-Goals:

1. Educate the community
2. Facilitate community engagement
3. Increase community-based opportunities for health and wellness

Systems

- Provide practitioners across various sectors with **skills that promote TI practice**
 - Trauma 201 training
 - Screening/brief intervention for pediatric residents in school-based health
 - Restorative justice
 - TI hospital collaborative



• Work to **institute systems change** through TI policies and procedures at the state-, regional-, organizational- and community-levels

- Informing foundations, changing funding priorities/portfolios
- Incorporating ACEs training into curriculum
- Including TI vision in strategic planning documents

• Use data to capture targeted areas of the Collaborative's impact to **improve policies, services, and practices, and drive systems change in Illinois**

- Data committee analyzing BRFSS data to create policy recommendations

Contact Us and Learn More:

Maggie Litgen, Manager, ACEs Program,
mlitgen@hmpg.org

Alexandra Murphy, Director of Health,
Alexandra.murphy@uw-mc.org

Visit us online at:

<http://www.hmpg.org/Programs/IL+ACE+Response+Collaborative>

STRENGTHENING
SOUTH CHICAGO